

RADWIN JET-DUO 1500 Series

Sector Base Station - Data Sheet (RW5000/HBS/5PG5/F5F5/FCC/JET-DUO/INT)



RW-5PG5-0655

Product Description

RW-5PG5-0655 is a sector Base Station radio unit (HBS) that includes two radios at 5 GHz band in a single unit. The unit provides up to 1500 Mbps net aggregate throughput.

RW-5PG5-0655 includes separate smart beamforming antenna for each carrier. It also includes an embedded GPS unit.

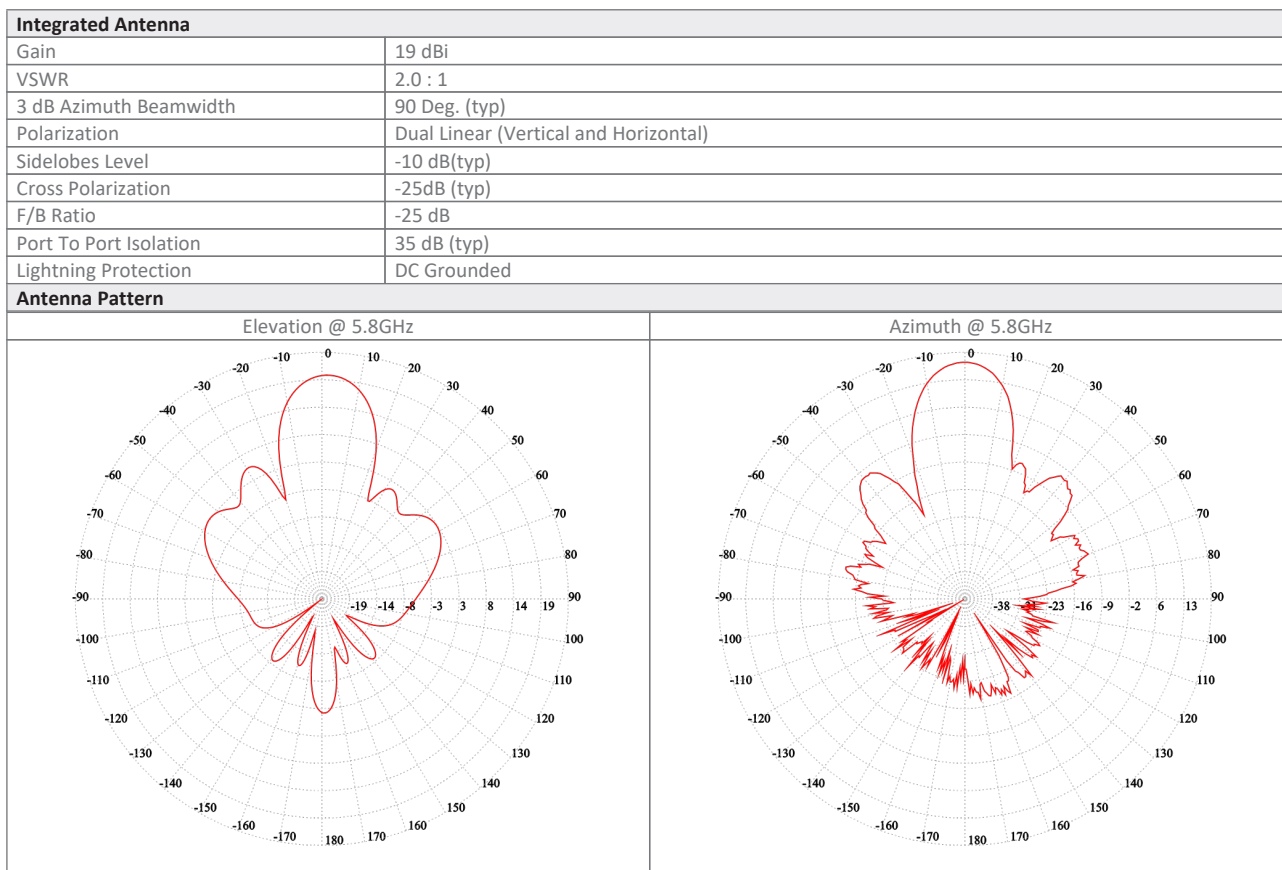
RW-5PG5-0655 supports 5.1 to 5.8 GHz.

Product Highlights

- Dual carriers base station radio with smart beamforming antennas supporting 5 GHz bands
- Up to 1500 Mbps (2 x 750 Mbps) net aggregated throughput
- Long range - Up to 40 km / 25 miles
- CIR or Best-Effort per SU
- Built-in GPS
- Gigabit WAN connectivity (SFP / PoE)
- Advanced MIMO, OFDM and Diversity technologies
- Dynamic Channel Bandwidth Selection
- Robust and reliable operation in harsh environments
- Ease of operation

Product Specifications:

Configuration					
Architecture	Outdoor Unit with a smart beamforming integrated antenna with embedded GPS				
PoE to ODU Interface	Outdoor CAT-5e; Maximum cable length: 100m for 10/100BaseT and 75m for 1000BaseT				
Data Interfaces	10/100/1000 Mbps RJ45 PoE or 1Gbps SFP				
Radio					
Max Capacity	1500 Mbps (2 x 750 Mbps) net aggregate throughput.				
Subscriber Units (HSUs) support	Up to 64 SUs (HW ready for 2 x 64 SUs)				
Range	Up to 40 km / 25 miles				
Channel Bandwidth	Configurable: 10, 20, 40, 80 MHz (for the default band); Dynamic Channel BW selection (20/40/80 MHz)				
Modulation	MIMO-OFDM (BPSK/QPSK/16QAM/64QAM/256QAM)				
Adaptive Modulation & Coding	Supported				
Smart Bandwidth Management (DBA)	Supported				
DFS	Not Supported				
Diversity	Supported				
Max Tx Power	25 dBm; max EIRP 36 dBm (for the default band)				
Duplex Technology	TDD				
Error Correction	FEC k = 1/2, 2/3, 3/4, 5/6				
Encryption	AES 128				
Support Indoor units	RADWIN AC PoE devices (9921-104X), DC PoE device (9921-1049)				
Uplink / Downlink Allocation	Configurable: Symmetric or Asymmetric				
End to End Latency	Typical: 3.5msec @ 2 HSUs; 20msec @ 64 HSUs				
Layer 2	Bridging learning of 5K MAC addresses				
QoS	Packet classification to 4 priority queues according to 802.1P or Diffserv				
VLAN Support	802.1Q, QinQ, 4094 VLANs				
TDD Intra Site Synchronization	Supported via GPS receiver				
TDD Inter Site Synchronization	Supported via GPS receiver				
ODU Management	IPv4/IPv6 dual-stack; SNMP v1, SNMPv3; HTTP/HTTPS using web browser				
802.1x	Support in future releases				
Option 82	Support in future releases				
Non PPPoE filtering	Support in future releases				
DHCP Filter	Support in future releases				
IGMP snooping	Support in future releases				
Nomadic subscribers	Supported				
RADIUS Authorization	Support in future releases				
RADIUS User authentication	Support in future releases				
Syslog	Support in future releases				
Supported Bands					
Band	CBW 10MHz [GHz]	CBW 20MHz [GHz]	CBW 40MHz [GHz]	CBW 80MHz [GHz]	Radio Compliance
5.8 GHz FCC/IC (default)	5.730-5.845	5.730-5.845	5.730-5.845	5.730-5.845	FCC 47CFR Part 15.407; ISSED RSS-247
5.1 GHz FCC	5.170-5.250	5.170-5.250	5.170-5.250	5.170-5.250	FCC 47CFR Part 15.407
5.1 GHz FCC	5.170-5.845	5.170-5.845	5.170-5.845	5.170-5.845	FCC 47CFR Part 15.407
Mechanical					
ODU Dimensions	35.6(w) x 37.1(h) x 11.0(d) cm				
ODU Weight	4.89 kg / 10.78 lbs				
Power					
Power Feeding	Power provided over ODU-IDU cable				
Power Consumption	<50W				
Environmental					
Operating Temperatures	-35°C to 60°C / -31°F to 140°F				
Humidity	100% condensing, IP67 (totally protected against dust and against immersion in water up to 1m)				
Safety					
US/CAN (cTUVus)	UL 62368-1 2nd edition, IEC/EN/UL/CSA 60950-22:2017				
CE/IEC	IEC/EN 62368-1:14+A11:17				
EMC					
FCC	47 CFR, Part15, Subpart B, Class B				
ETSI	EN 301 489-1, EN 301 489-4, 301 489-17				
CAN/CSA-CEI/IEC	ICES-003				
AS/NZS	CISPR 32:2015 Class B				



Ordering Info

Part Number: RW-5PG5-0655

Description: RADWIN JET-DUO 1500 ODU, with a smart beamforming integrated antenna with embedded GPS, supporting multi frequency bands at 5.x GHz, factory default 5.8 GHz FCC/IC.

Datasheet information can be changed by manufacturer without prior notice